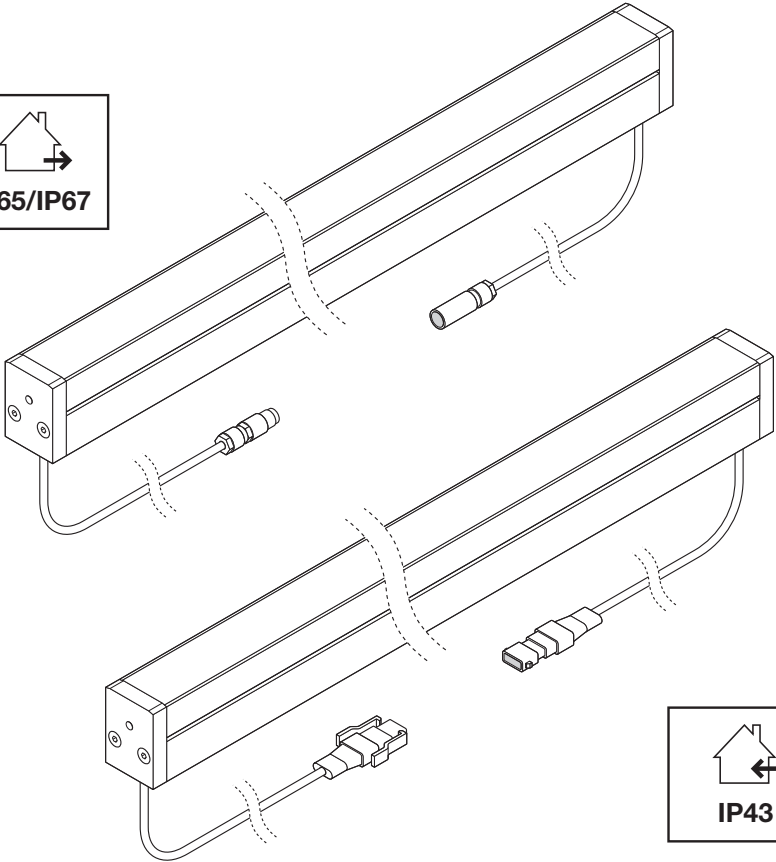
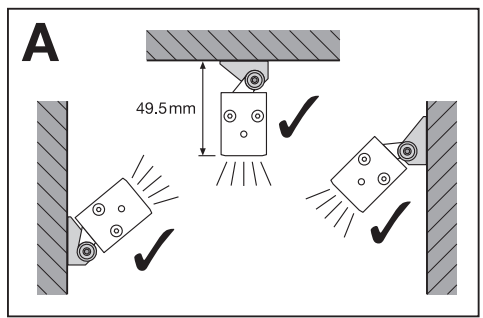
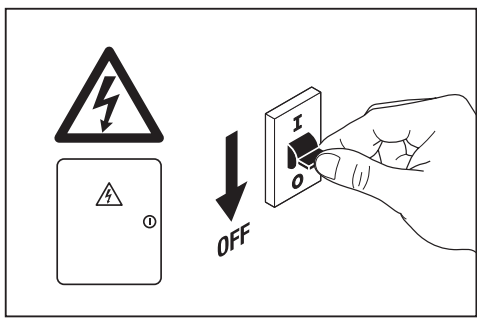
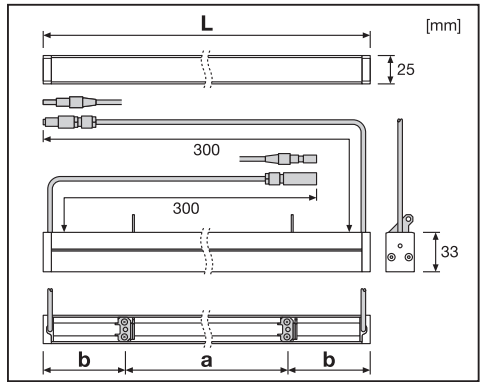
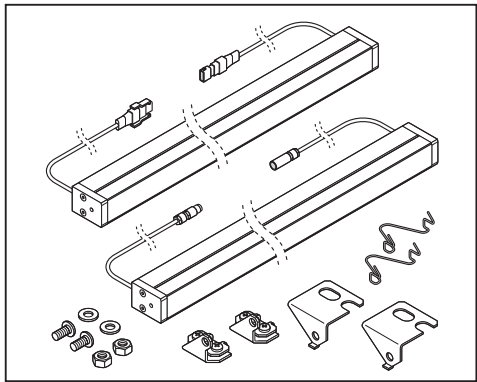
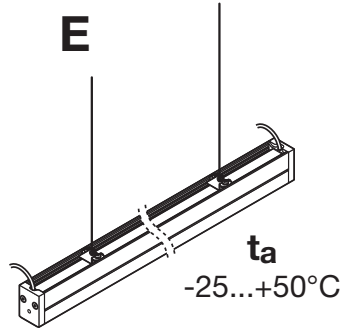
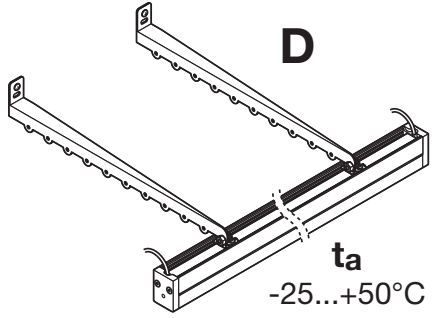
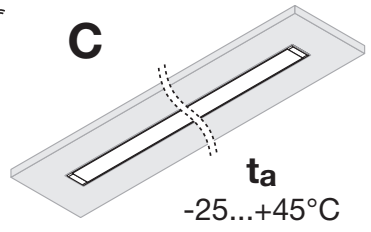
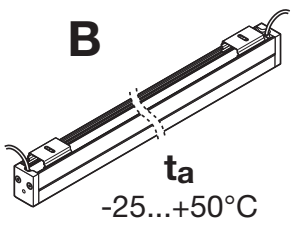
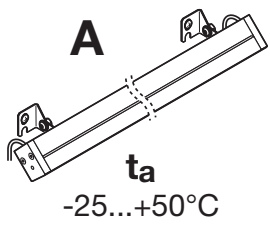
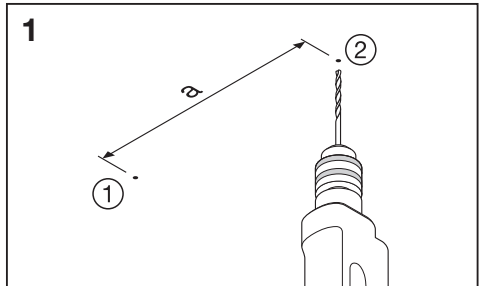
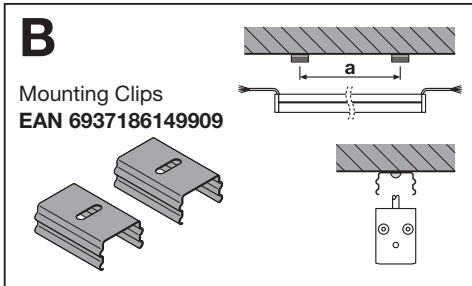
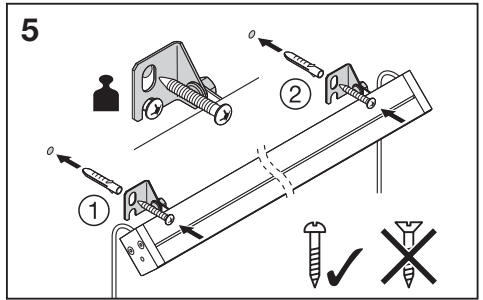
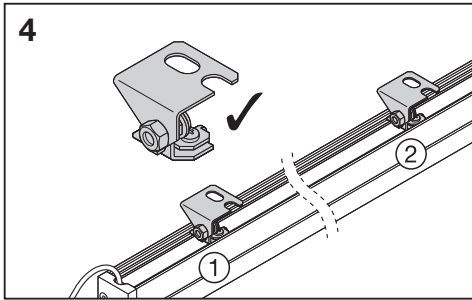
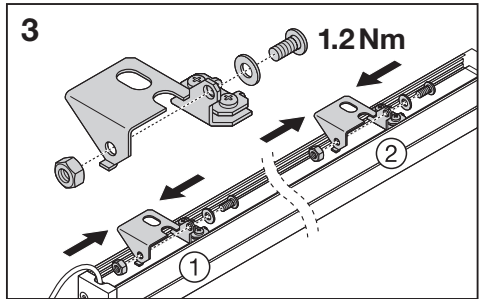
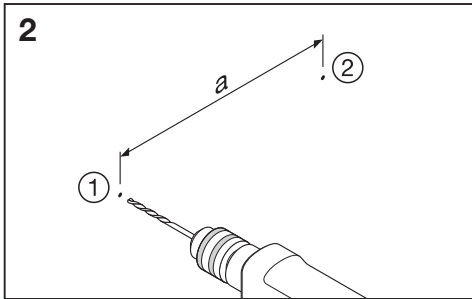
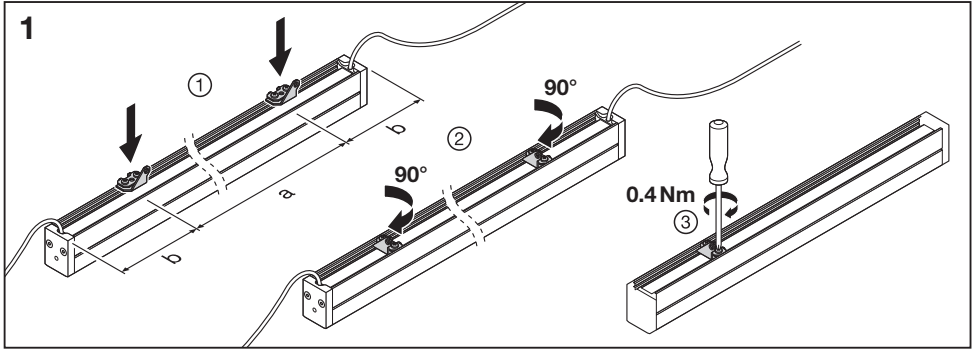


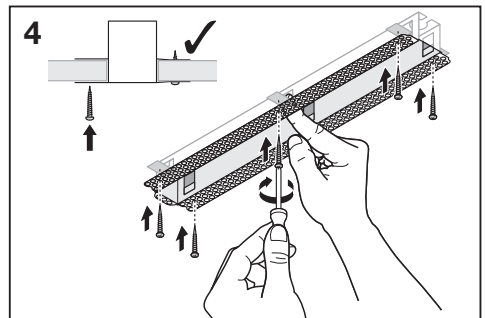
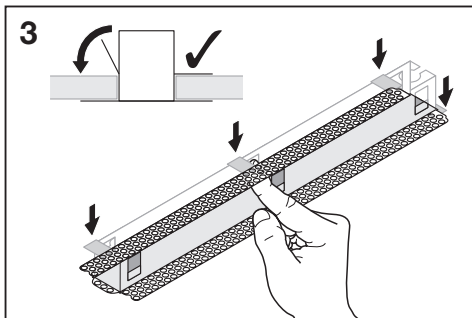
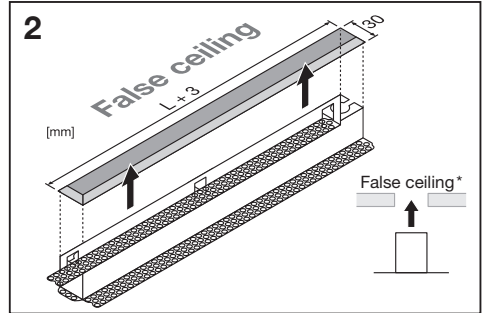
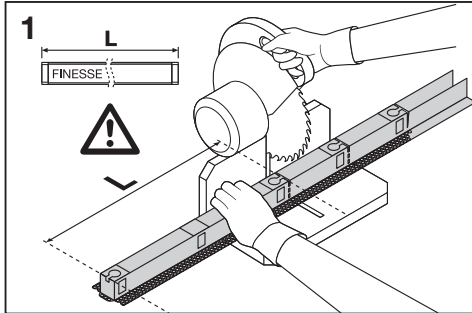
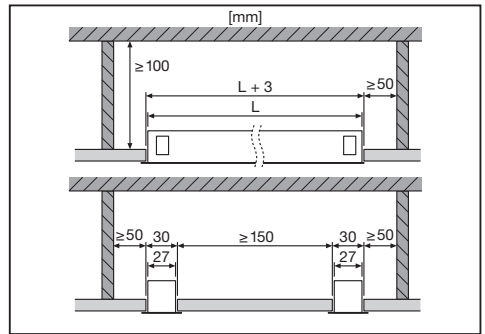
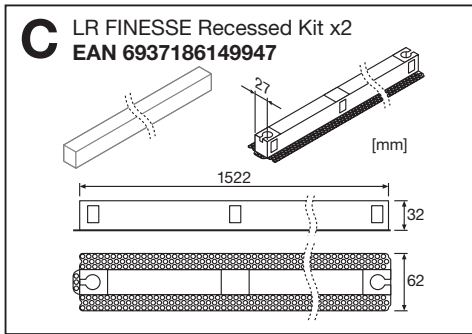
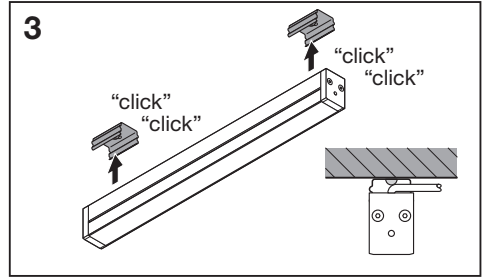
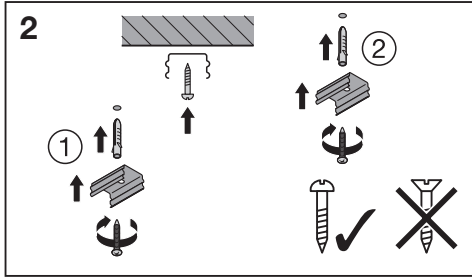
FINESSE White

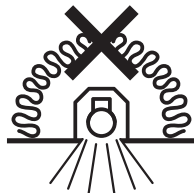
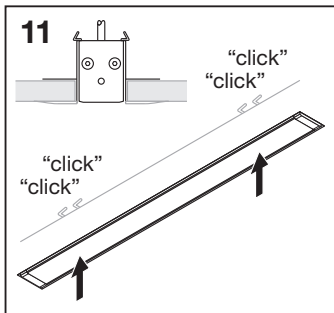
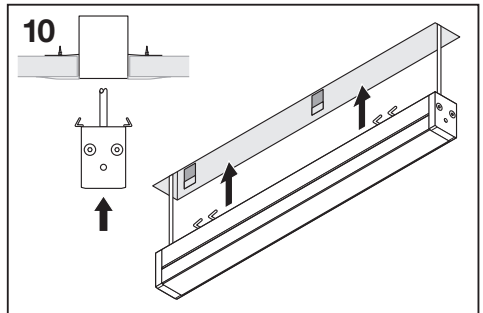
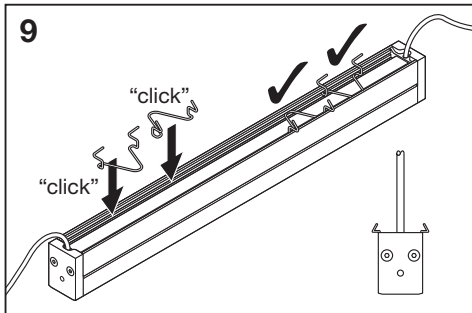
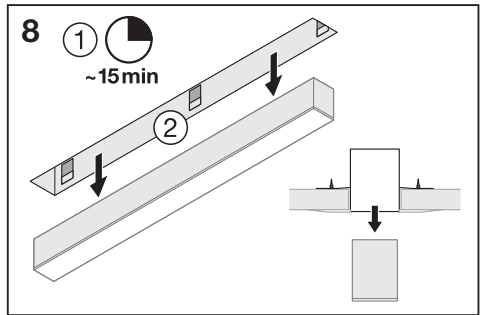
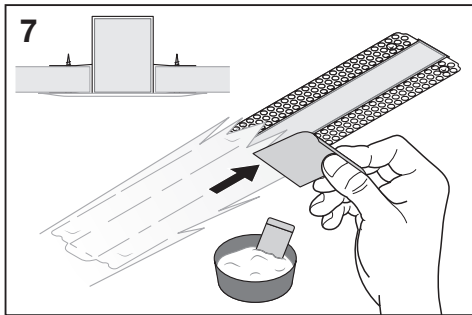
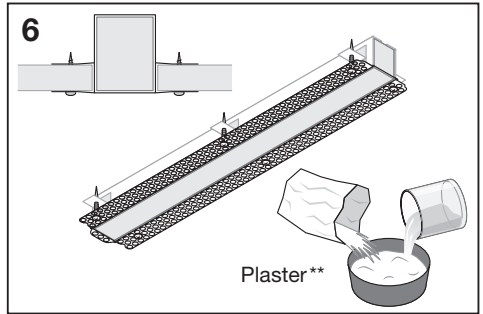
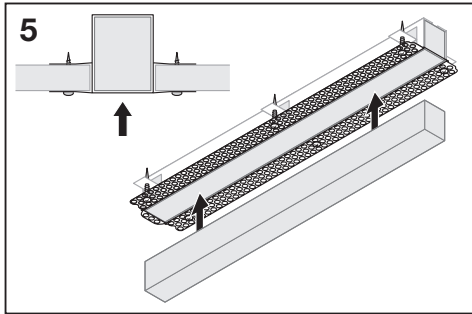


	2000 lm/m	1200 lm/m	900 lm/m
CRI 90	28.9W/m	16.3W/m	10.6W/m
CRI 80	28.9W/m	13.4W/m	9.9W/m

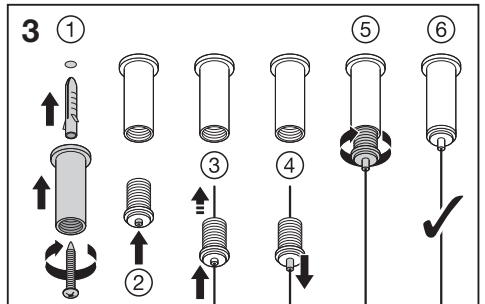
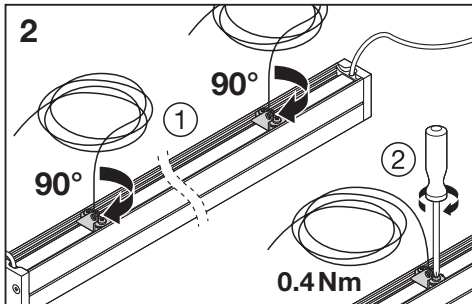
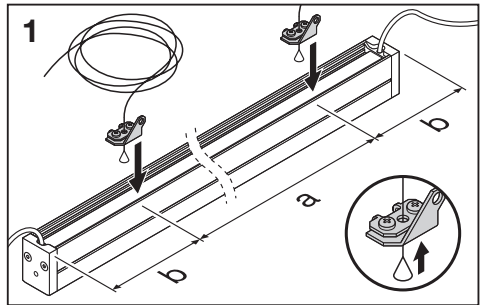
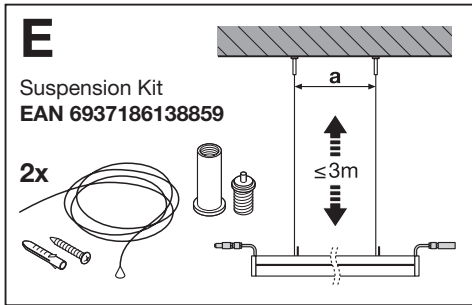
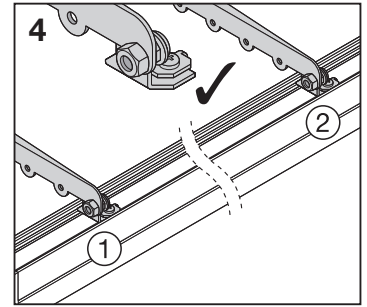
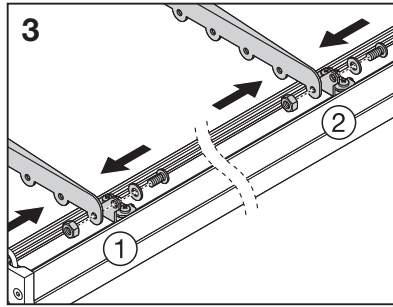
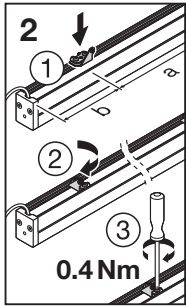
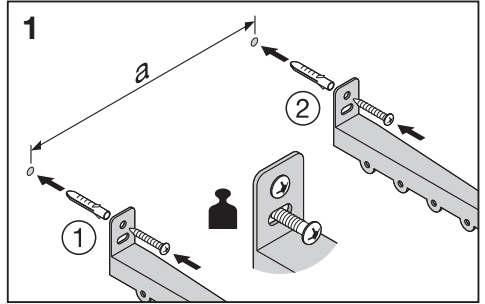
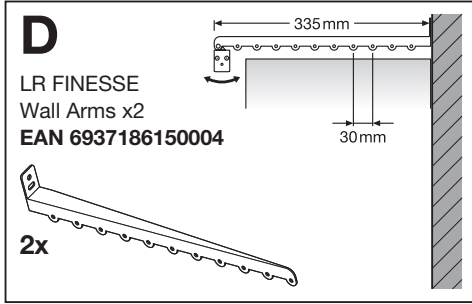


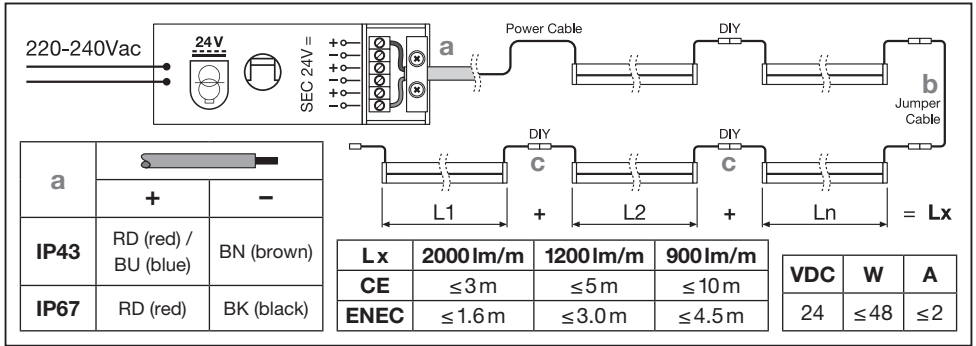






⊗ Nicht mit Isoliermaterial bedecken ⊗ Do not cover by insulating material ⊗ Ne pas recouvrir de matériel isolant
 ⊕ Non coprire con materiale isolante ⊕ Niet bedekken door isolatiemateriaal ⊕ Nie przykrywać materiałem izolacyjnym ⊕ Yalıtım malzemesi ile kaplamayın





LR FINESSE outdoor
Power Cable 5m IP68
EAN 6937186149985

IP65/IP67

—: BK (black)
+: RD (red)

LR FINESSE outdoor
Jumper 0.5m IP68
EAN 6937186149923

IP65/IP67

LR FINESSE outdoor
DIY male/female IP68 x5
EAN 6937186149961

IP65/IP67

Ⓒ Installation must be finished by a professional electrical installer so that any product damage or even accident can be avoided. Turn off the power before installation and only use 24V VDC LED Driver. To make sure getting optimal performance, please handle with care during installation process. Keep it away from all open fire or high temperature objects. Turn off the power before cleaning the product using dry rag but not corrosive chemical solvent. Take usage following the rated voltage printing on package or product, too high or too low for input voltage value will damage the product. IEC 60598-1 cl. 2.6 (3.3.17): Products with type Y attachment: if the external flexible cable or cord of this product is damaged, it shall be exclusively replaced by the manufacturer or his service agent or a similar qualified person in order to avoid a hazard. IEC 60598-1 cl. 2.6 (3.3.21): The light source contained in this product shall only be replaced by the manufacturer or his service agent or a similar qualified person. *False ceiling; **Plaster; Technical support: www.inventronicsglobal.com

tallation durch einen professionellen Elektriker erfolgen. Schalten Sie vor der Installation die Stromversorgung ab und benutzen Sie ausschließlich einen 24-V-Gleichstrom-LED-Treiber. Verfahren Sie bei der Installation vorsichtig, um eine optimale Leistung zu gewährleisten. Von offenem Feuer und sonstigen Wärmequellen fernhalten. Schalten Sie vor der Reinigung des Produkts die Stromversorgung ab und verwenden Sie nur ein trockenes Tuch. Verwenden Sie keinesfalls ein korrosives chemisches Lösungsmittel. Verwenden Sie die auf der Verpackung des Produkts angegebene Nennspannung – eine zu hohe oder zu niedrige Eingangsspannung beschädigt das Produkt. IEC 60598-1 cl. 2.6 (3.3.17): Produkte mit Anlagentyp Y: Wenn das flexible Kabel oder das Kabel dieses Produkts beschädigt ist, sollte es nur durch den Hersteller, seinen Servicemitarbeiter oder eine ähnlich qualifizierte Person ausgetauscht werden, um eine Gefährdung zu vermeiden. IEC 60598-1 cl. 2.6 (3.3.21): Die in diesem Produkt enthaltene Lichtquelle sollte nur durch den Hersteller, seinen Servicemitarbeiter oder eine ähnlich qualifizierte Person ausgetauscht werden. *Zwischendecke; **Gips; Technische Unterstützung: www.inventronicsglobal.com

Ⓓ Um Schaden am Produkt und Unfälle zu vermeiden, muss die Ins-

(F) L'installation doit être effectuée par un électricien qualifié afin d'éviter tout risque d'accident ou tout dommage du produit. Couper l'alimentation électrique avant de procéder à l'installation. Utiliser uniquement un pilote de LED 24V DC. Manipuler le produit avec soin lors de son installation afin d'assurer une performance optimale. Tenir éloigné du feu et de toute source de chaleur. Couper l'alimentation électrique avant de nettoyer le produit. Utiliser un chiffon sec et doux pour le nettoyage de l'appareil, jamais de solvant chimique corrosif. Utiliser la plage de tension nominale indiquée sur le produit ou l'emballage – toute tension d'entrée supérieure ou inférieure aux niveaux autorisés risque d'endommager le produit. IEC 60598-1 cl. 2.6 (3.3.17): Produits avec une attache de type Y: si le câble ou cordon souple externe du produit est endommagé, seul le fabricant, l'agent gestionnaire ou bien une personne qualifiée est en droit de le remplacer afin d'éviter tout risque. IEC 60598-1 cl. 2.6 (3.3.21): La source lumineuse de ce produit ne peut être remplacée que par le fabricant, l'agent gestionnaire ou bien une personne qualifiée. *Faux plafond; **Plâtre; Support technique: www.inventronicsglobal.com

(I) L'installazione deve essere eseguita da un elettricista qualificato, per evitare danni al prodotto o altri incidenti. Interrompere l'alimentazione prima dell'installazione e utilizzare esclusivamente un driver LED VDC 24 V. Per garantire un funzionamento ottimale, si raccomanda di maneggiare con cura durante l'installazione. Tenere il prodotto lontano da fiamme e altre fonti di calore. Interrompere l'alimentazione prima di pulire il prodotto con un panno asciutto. Non adoperare solventi chimici corrosivi. Usare la tensione nominale indicata sul prodotto o sul suo imballaggio. Livelli di tensione di ingresso troppo alti o troppo bassi possono danneggiare il prodotto. IEC 60598-1 cl. 2.6 (3.3.17): Prodotti con attacco di tipo Y: se il cavo di alimentazione o il cavo flessibile esterno di questo prodotto sono danneggiati, lo stesso deve essere sostituito esclusivamente dal produttore o da un suo agente dell'assistenza o da un'equivalente persona qualificata, al fine di evitare un pericolo. IEC 60598-1 cl. 2.6 (3.3.21): La sorgente di luce inclusa in questo prodotto deve essere sostituita esclusivamente dal produttore o da un suo agente dell'assistenza o da un'equivalente persona qualificata. *Controsoffitto; **Gesso; Supporto tecnico: www.inventronicsglobal.com

(NL) De installatie moet door een professionele elektricien worden uitgevoerd om beschadiging van het product en ongelukken te voorkomen. Schakel voor installatie de stroom uit en gebruik alleen een 24V VDC-leddriver. Om optimale prestaties te garanderen, dient u tijdens het installatieproces voorzichtig te werk te gaan. Verwijderd houden van open vuur en alle overige bronnen van warmte. Schakel de stroom uit voordat u het product met een droge doek reinigt en gebruik geen bijtende chemische oplosmiddelen. Gebruik de nominale spanning die op de verpakking of het product wordt vermeld – te hoge of te lage ingangsspanningswaarden resulteren in beschadiging

van het product. IEC 60598-1 cl. 2.6 (3.3.17): Producten met aansluiting van type Y: als de externe flexibele kabel of het snoer van dit product is beschadigd, mag, om gevaar te voorkomen, vervanging uitsluitend worden uitgevoerd door de fabrikant, diens vertegenwoordiger of een vergelijkbare gekwalificeerde persoon. IEC 60598-1 cl. 2.6 (3.3.21): De lichtbron in dit product mag alleen worden vervangen door de fabrikant, diens vertegenwoordiger of een vergelijkbare gekwalificeerde persoon. *Verlaagd plafond; **Stuc; Technische ondersteuning: www.inventronicsglobal.com

(PL) Aby zapobiec uszkodzeniu produktu a nawet wypadkom, montaż musi dokonać wykwalifikowany elektryk. Przed montażem wyłączać zasilanie i używać tylko sterownika LED 24 V DC. Aby zapewnić optymalne parametry pracy, podczas całego procesu montażu należy ostrożnie obchodzić się z produktem. Zachować odpowiednią odległość od otwartego ognia i wszelkich źródeł ciepła. Przed rozpoczęciem czyszczenia produktu należy wyłączyć zasilanie. Do czyszczenia używać suchej szmaty, nie używać rozpuszczalnika chemicznego powodującego korozję. Stosować napięcia znamionowe podane na opakowaniu lub produkcie – za wysokie lub za niskie napięcia wejściowe uszkadzają produkt. IEC 60598-1 cl. 2.6 (3.3.17): Produkty ze złączem typu Y: jeżeli zewnętrzny kabel elastyczny lub przewód produktu jest uszkodzony, to w celu uniknięcia zagrożenia musi on zostać wymieniony przez producenta albo jego przedstawiciela serwisowego bądź przez podobnie wykwalifikowaną osobę. IEC 60598-1 cl. 2.6 (3.3.21): Źródło światła zamontowane w tym produkcie może być wymieniane tylko przez producenta lub jego przedstawiciela serwisowego bądź przez podobnie wykwalifikowaną osobę. *Sufit podwieszany; **Tynk; Wsparcie techniczne: www.inventronicsglobal.com

(TR) Ürünün zarar görmesini veya kazaları önlemek için kurulumu profesyonel bir elektrik teknisyeni gerçekleştirmelidir. Kurulmadan önce gücü kapatın ve sadece 24 V VDC LED sürücü kullanın. Optimum performans sağlamak için lütfen kurulum işlemi sırasında dikkatli olun. Açık alevden veya her türlü ısı kaynağından uzak tutun. Ürünü kuru bir bez kullanarak temizlemeyden önce gücü kapatın ve aşağıdaki bir kimyasal çözücü kullanmayın. Ambalajda veya üründe belirtilen nominal voltajı kullanın; çok yüksek veya çok düşük giriş voltajı seviyeleri ürüne zarar verir. IEC 60598-1 cl. 2.6 (3.3.17): Y tipi bağlantılı ürünler: Bu ürünün esnek dış kablosu veya iç kablosu zarar gördüyse tehlikelerden kaçınılması adına üretici veya benzer, nitelikli bir kişi tarafından özel olarak değiştirilmelidir. IEC 60598-1 cl. 2.6 (3.3.21): Bu üründeki ışık kaynağı yalnızca üretici, üreticinin servis yetkilisi veya benzer, nitelikli bir kişi tarafından değiştirilmelidir. *Asma tavan; **Alçı; Teknik destek: www.inventronicsglobal.com

® Inventronics Turkey Teknoloji Ticaret Limited Şirketi, Büyükdere Cad. Bahar Sok. River Plaza No: 13/5 Sisli 34394 İstanbul, Turkey

® Inventronics Poland Sp. z o.o., Al. Jerozolimskie 94, 00-807 Warsaw, Poland

® Forgalmazo: Inventronics Netherlands B.V., Polluxstraat 21, 5047RA Tilburg

® Inventronics Netherlands B.V., Polluxstraat 21, 5047RA Tilburg

® Uvoznik: Inventronics Netherlands B.V., Polluxstraat 21, 5047RA Tilburg

® Инвентроникс Нидерландия Б.В., Полукстраат 21, 5047 PA Тилбург

® Εισαγωγή: Inventronics Netherlands B.V., Polluxstraat 21, 5047RA Tilburg

® Inventronics Guangzhou Technology Limited; Room 1105, Clifford Corporate Center Building, No. 15, Fuhua Road, Clifford Estate Panyu, Guangzhou, Guangdong province, China, Postal code: 511496

® 广州英飞特科技有限公司; 广州市番禺區钟村街祈福新邨福華路15号祈福集团中心1105室 邮编: 511496

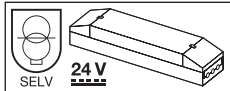
® INVENTRONICS MALAYSIA SDN. BHD., Kuala Lumpur, Penang, Tower A Vertical Business Suite

® Inventronics Korea Inc, Seoul, Yeongdong-daero 417

® 인벤티로닉스코리아 유한회사, 서울특별시 강남구 테헤란로25길 6-9, 6층 674호

® INVENTRONICS (HONG KONG) LIMITED, Room 30-108C, 29/F, Tower 5, The Gateway, 15 Canton Road, Tsim Sha Tsui, Hong Kong

® INVENTRONICS SSL India Private Limited, 4th and 5th floor, B Wing, Sky-Height, Valipeer Road, Kalyan West Kalyan City, Thane, Kalyan, Maharashtra-421301



10449058
G15131267
2025-07-09



Inventronics GmbH
Berliner Allee 65
86153 Augsburg
Germany
www.inventronicsglobal.com